



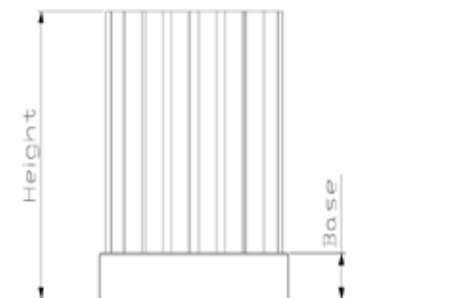
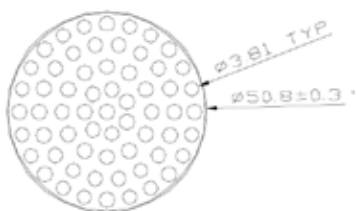
## CML5001 Series Ordering Information

Part	Height	Base	Seq #
CML5001-	52	- 10	- 101
CML5001-	52	- 8	- 101
CML5001-	52	- 6	- 101

### LED Heat Sink Specification



1. Material: Al 6063
2. Dimension:  
Foot print: Ø50mm
3. Finish: Black Anodize



### Performance

Heat Source (LxW)	37x37mm
-------------------	---------

Results Based On Natural Convection	
Height	oC/W
CML5001-52-10-101	7.52
CML5001-52-8-101	7.64
CML5001-52-6-101	7.71